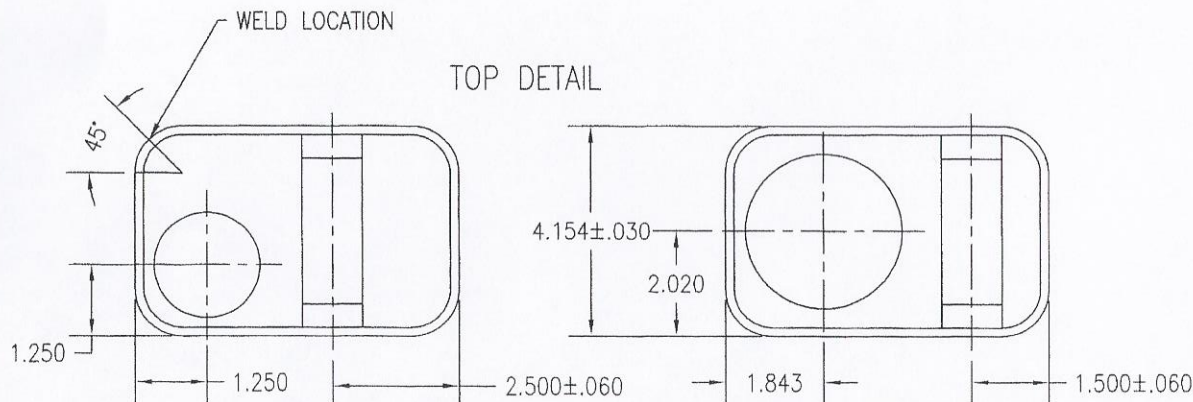
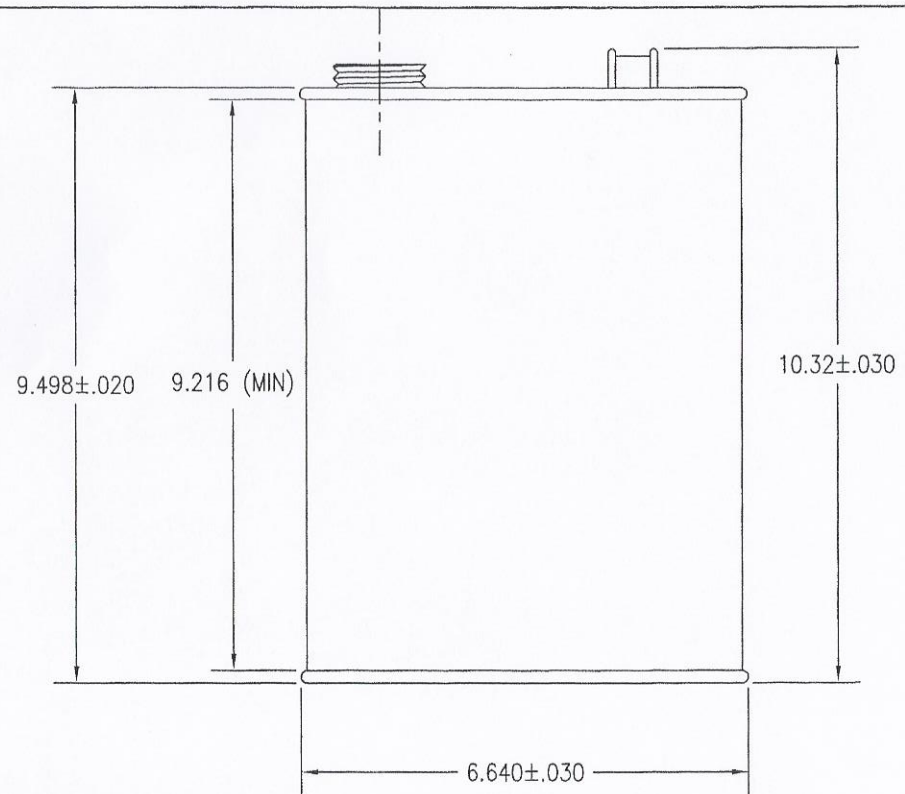


NOZZLE SIZE & TYPE	CENTER OPENING	END OPENING
RIEKE JR.		✓
32mm METRIC DIN		✓
32mm METRIC REL		✓
1 1/8" BETA		✓
1 1/4" ALPHA		✓
1 1/4" INTERNATIONAL		✓
1 3/4" ALPHA		✓
1 3/4" DELTA		✓
1 3/4" INTERNATIONAL		✓
2-5/8" SINGLE FRICTION	✓	
2-7/8" SCREW NECK	✓	

57 M M ✓



Illing Part# 1200A & 1201A

REV. BY	NO.	DATE	REVISION DESCRIPTION				
WTB	A	6-3-99	ADDED 32mm METRIC REL TO CHART				
DRAWN BY:	SCALE	D.Schack	B	7-18-2001	CHANGED TO TWO PLACE DECIMALS, CENTER OPENING WAS NOT CENTERED ON MINOR AXIS		
WTB	NONE	D.Schack	C	11/30/2001	ADDED NOTE FOR EMBOSSED UN LOGO		
CHECKED BY:	DATE	D.Schack	D	2/4/2001	ADDED 57mm METRIC DIN TO CHART		
WTB	1-07-99	D.BLYTHE	E	1/21/2003	CORRECTED HANDLE LOCATION TO 2.787 FROM 2.500		
APPROVED BY:	THIS DRAWING AND ALL INFORMATION HERIN CONTAINED IS THE EXCLUSIVE PROPRIETARY PROPERTY OF THE MANUFACTURE OR ITS SUBSIDIARIES, AND IS TO BE RETAINED IN CONFIDENCE. IT IS NOT TO BE DUPLICATED, OR TO BE USED FOR ANY PURPOSE OTHER THAN WHAT IS WAS DISCLOSED FOR, AND IS TO BE RETURNED TO THE MANUFACTURE, ON DEMAND.			SUPERCEDES	MATERIAL	PRINT NO.	REV.
WTB						P0403-2-001	E

Distributed by:  **ILLING**
Company, Inc.
Packaging Your Vision

PRODUCT DRAWING
GALLON "F" STYLE
403 X 610 X 907

Container Technical Data Sheet

610x403x907 – Gallon Oblong

Body

Material Thickness (min)	.23mm
Temper	T3
Tin Coating	No. 20ETP
Side Seam Construction	Welded

Bottom

Material Thickness (min)	.29mm
Temper	T3
Tin Coating	No. 20ETP

Top

Material Thickness (min)	.29mm
Temper	T3
Tin Coating	No. 20ETP

Sealing Compound Darex 9115

Nozzles Various screw neck

Container Capacity (closed can) 135 fl. oz.

1200A
1201A